

**HCRMA Board of Directors**

**S. David Deanda, Jr., Chairman**  
**Ezequiel Reyna, Jr., Vice-Chairman**  
**Juan Carlos Del Angel, Secretary/Treasurer**  
**Gabriel Kamel, Director**  
**Sergio Saenz, Director**  
**Michael J. Williamson, Director**  
**Francisco "Frank" Pardo, Director**

**HCRMA Administrative Staff**

**Pilar Rodriguez, PE, Executive Director**  
**Ramon Navarro IV, PE, CFM, Chief Constr. Eng.**  
**Celia Gaona, CIA, Chief Auditor/Compliance Ofcr.**  
**Jose Castillo, Chief Financial Ofcr.**

**General Engineering Consultant**  
**HDR Engineering, Inc.**

# Overview

- ❑ 365 TOLL Project Overview
- ❑ IBTC Project Overview
- ❑ Segment 4 / Section A West Plan
- ❑ Overweight Permit Summary

## MISSION STATEMENT:

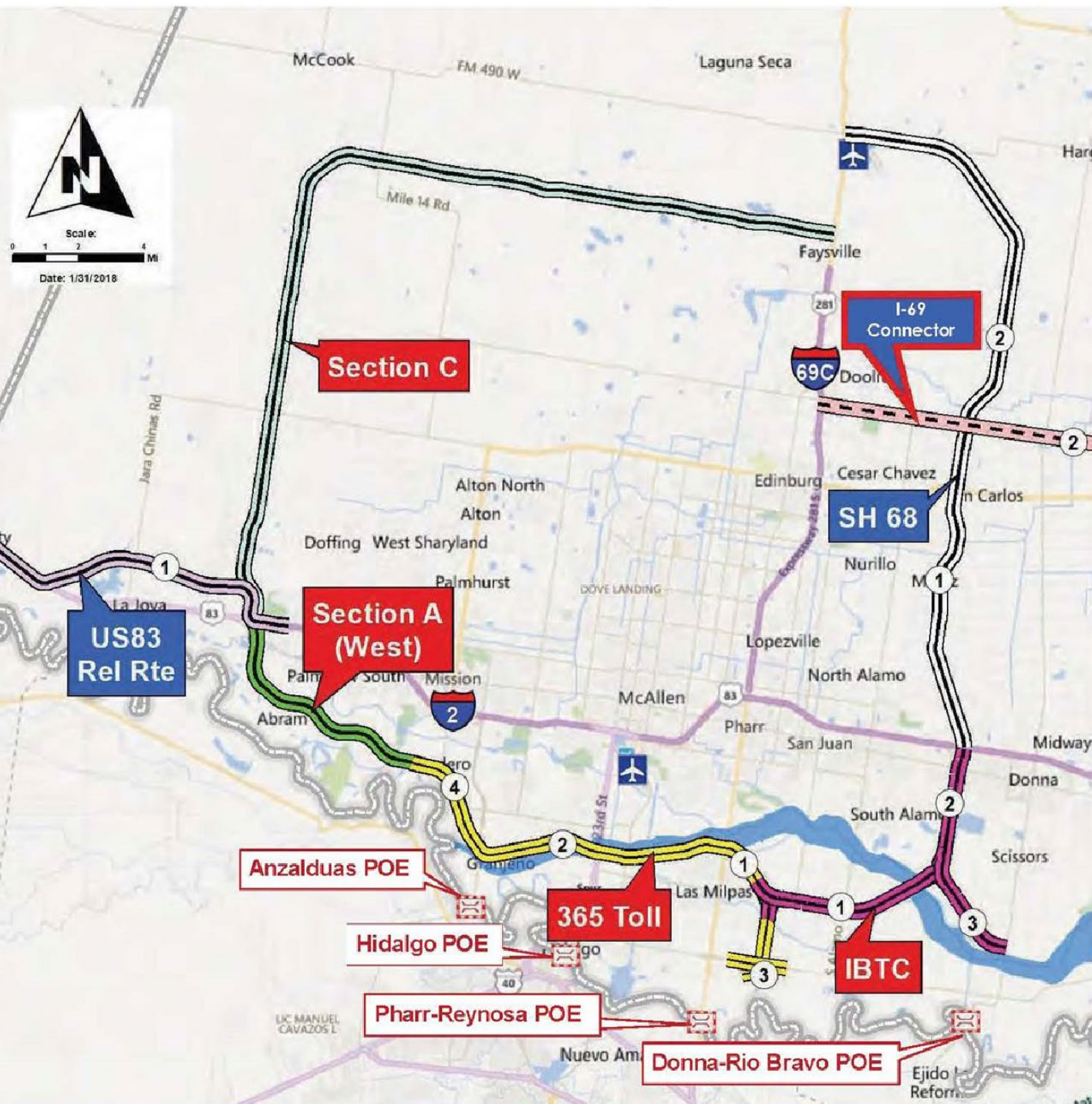
To provide our customers with a rapid and reliable alternative for the safe and efficient movement of people, goods, and services.





# HCRMA STRATEGIC PLAN

DEVELOP THE  
INFRASTRUCTURE TO  
SERVE A POPULATION  
OF APPROXIMATELY  
800,000 RESIDENTS  
AND  
5 INTERNATIONAL  
PORTS OF ENTRY



**HCRMA**  
HIDALGO COUNTY REGIONAL MOBILITY AUTHORITY





# HCRMA/TxDOT Strategic Interests in Hidalgo County

- Project**
- 0010 IBTC
  - 0030 365 TOLL
  - 0040 Section A West
  - 0050 US 83 Relief Route
  - 0060 Section C
  - 0070 SH 68
  - FM1925 SH 68 to US 77
  - PH1 FM 491 to US 77
  - PH2 SH 68 to FM 491

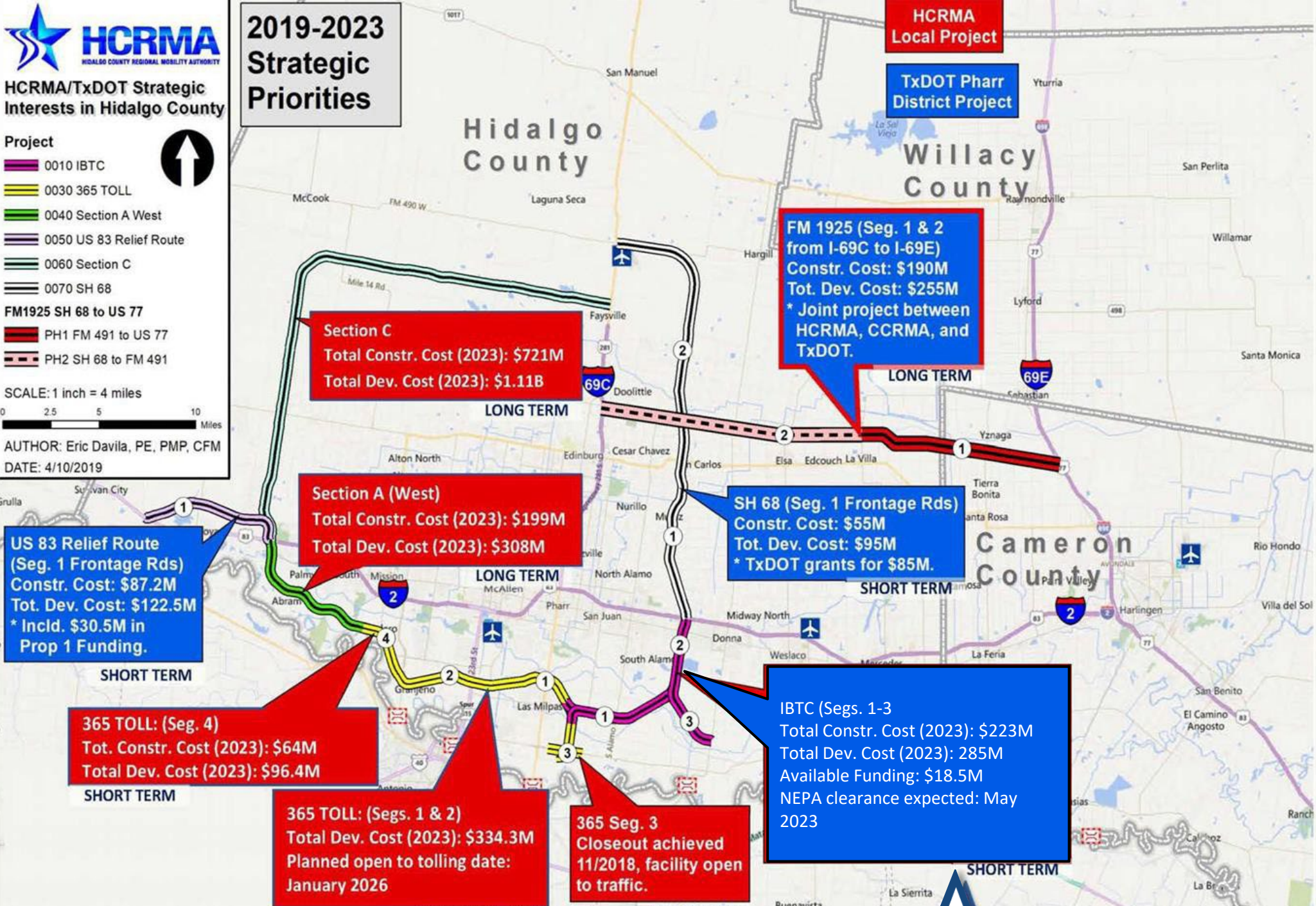


SCALE: 1 inch = 4 miles

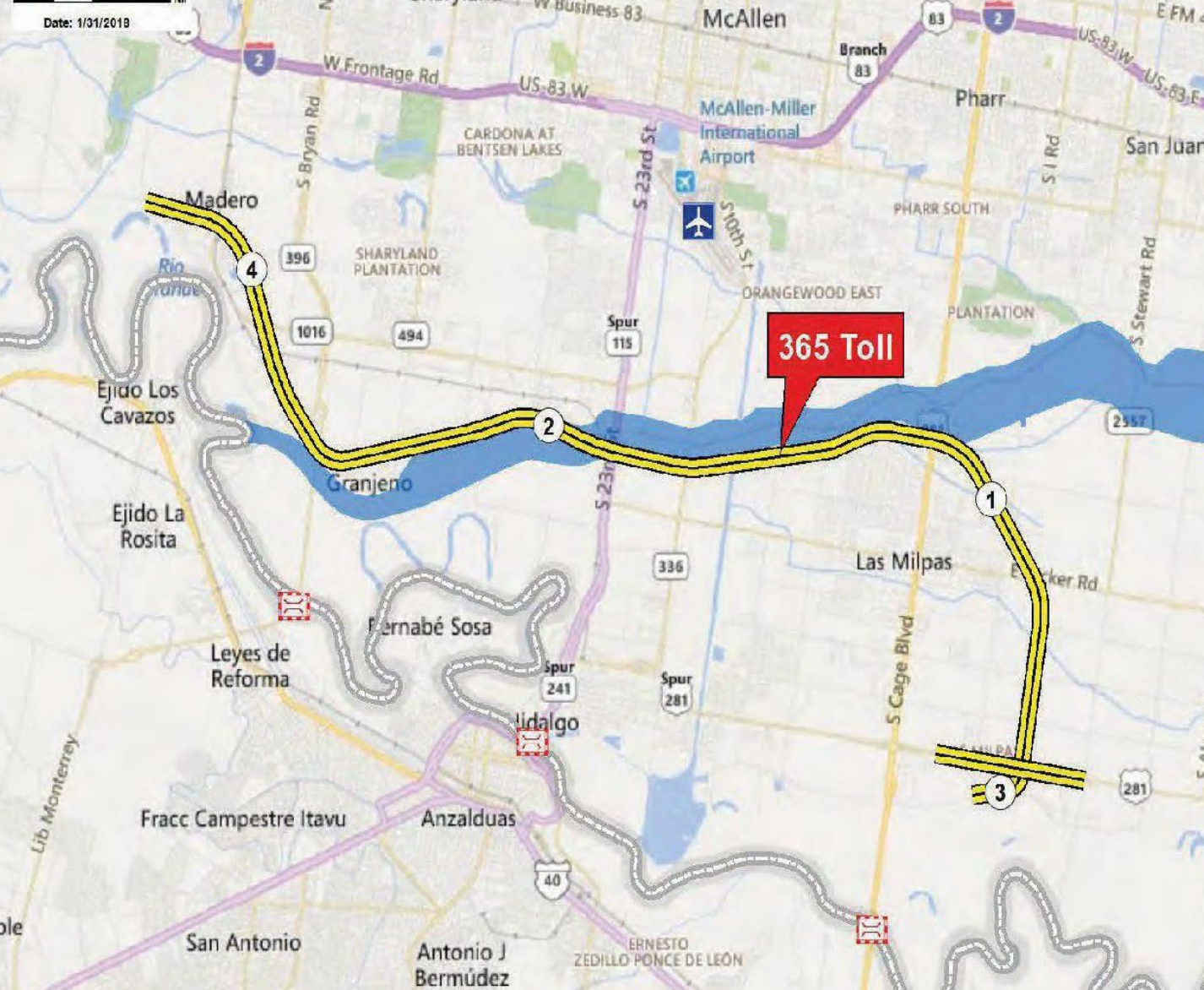


AUTHOR: Eric Davila, PE, PMP, CFM  
DATE: 4/10/2019

## 2019-2023 Strategic Priorities







**MAJOR MILESTONES:**  
 NEPA CLEARANCE  
 07/03/2015

100% ROW ACQUIRED

**PH 1: 365 SEG. 3**  
 LET: 08/2015  
COMPLETED

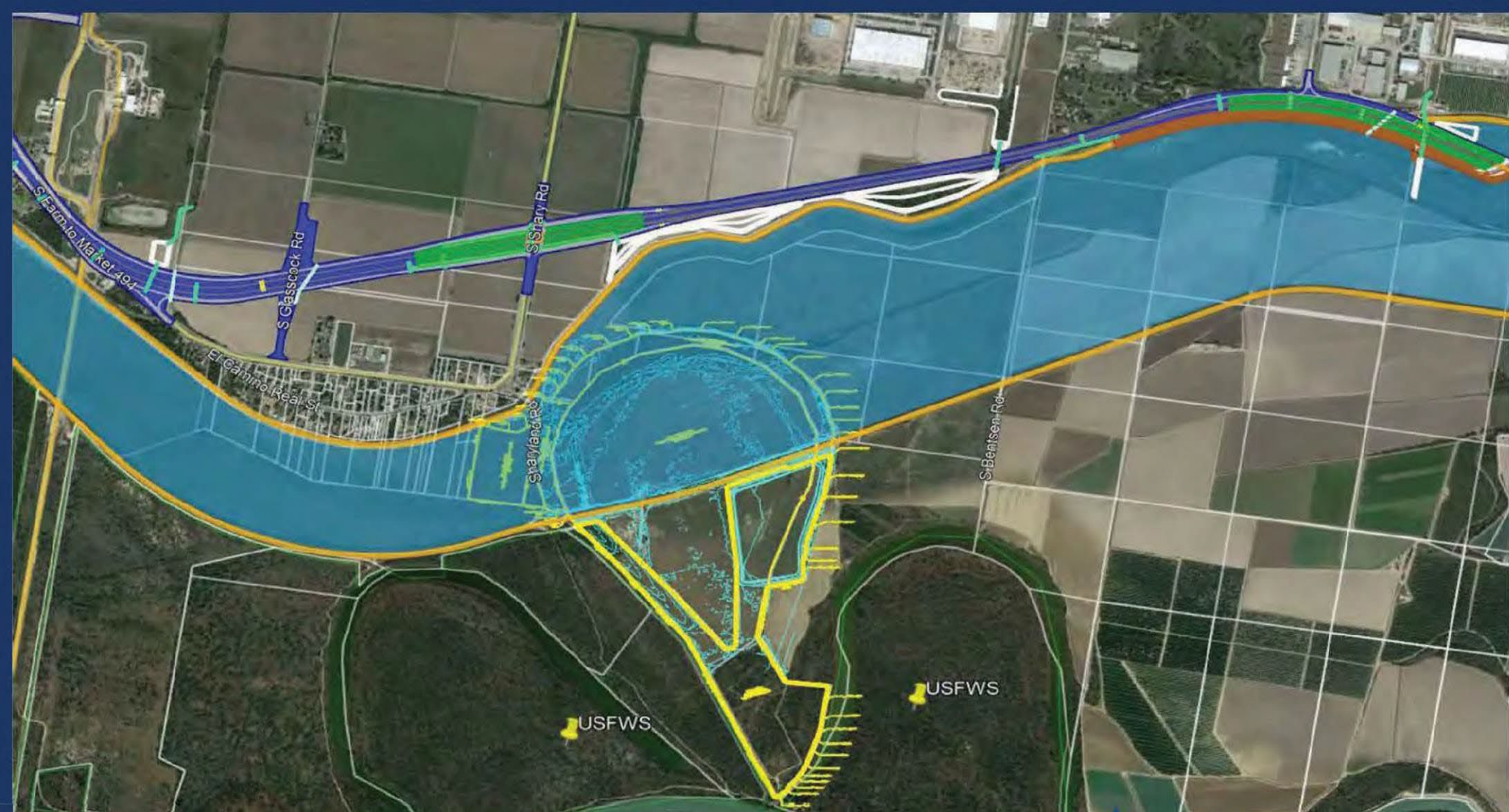
**PH 2: 365 TOLL**  
**SEGS. 1 & 2**  
**LET: 11/2021**  
 OPEN: 01/2026

[SEGS. 1 & 2] LIMITS FROM 0.8 MI. W. FM 396 / ANZ. HWY.  
 TO US 281 / BSIF CONNECTOR [365 SEG. 3 COMPLETED]  
 [SEG. 4 FUTURE] LIMITS FROM FM 16 / CONWAY  
 TO 0.8 MI. W. FM 396 / ANZALDUAS HIGHWAY





# GRANJENO WETLAND MITIGATION SITE





# LETTING:

## PROJECT DETAILS:

The HCRMA Granjeno Wetland Mitigation Site project is for the restoration of 23.88 acres of land, including approximately 17 acres planned specifically for wetland restoration. The project consists of grading and compaction of approximately 19 acres to establish a wetland which includes the placement of a clay liner and plant root zone soil strata. It also includes berm grading and compaction of approximately 6 acres of upland area. The project includes construction of an access driveway and road including maintenance and brush clearing/trimming. The project includes construction of a groundwater well with controls, approximately 3,000 linear feet of pvc distribution pipe, associated equipment, and a security fence.

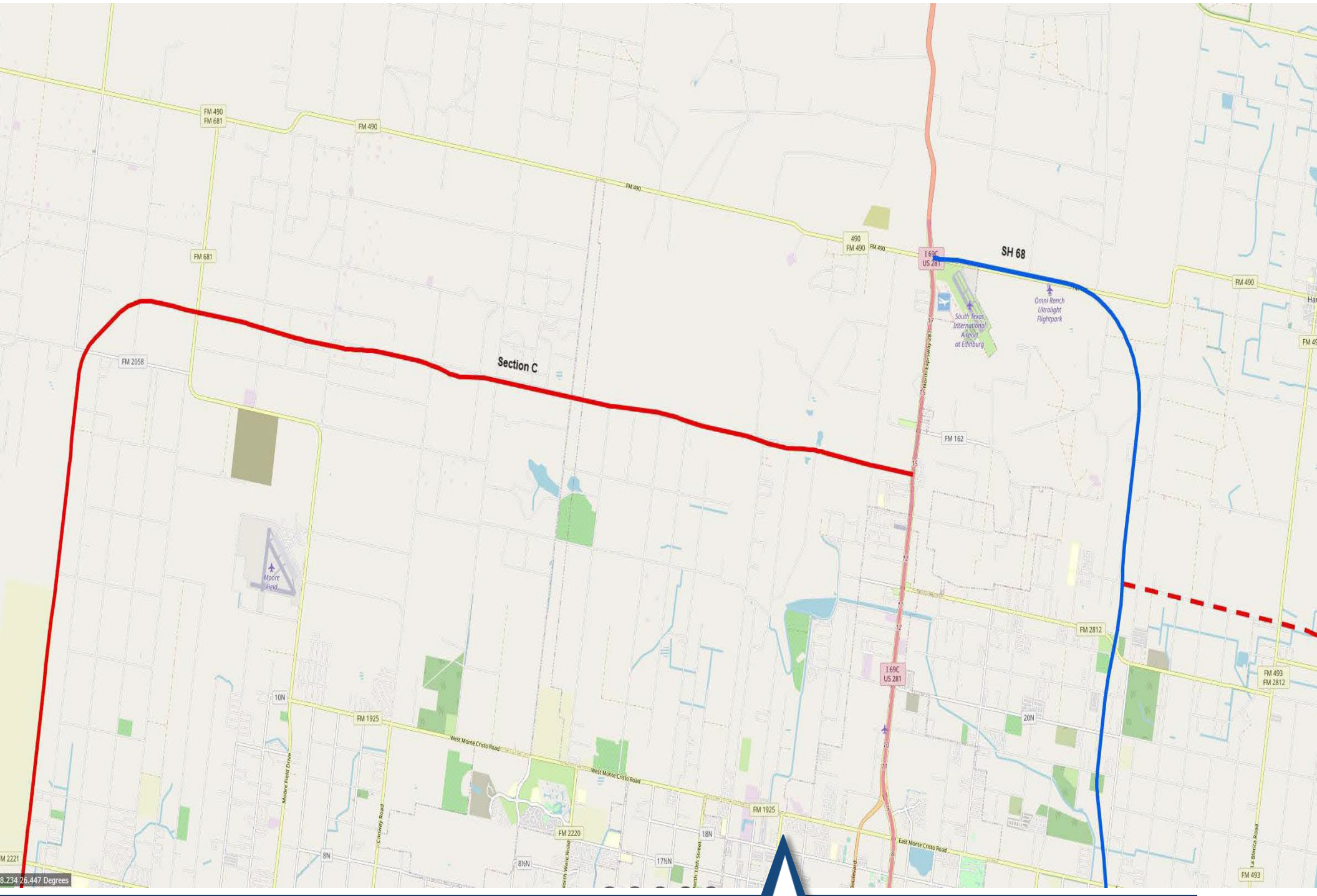
- (MANDATORY) In-person or Virtual Attendance Option.

Pre-Bid Meeting: Tuesday, February 20, 2024, 2 P.M. C.S.T.

- All inquiries shall be submitted by 3:00PM CST on Friday, March 8, 2024. Inquiries beyond this date will not be responded to.
- Electronic bids via CivCast will be received until 3:00 P.M. C.S.T., Wednesday, March 13, 2024.
- Bid opening date & time: Wednesday, March 13, 2024, Until 3:05 P.M. C.S.T.







M 2221  
8.234 26.447 Degrees



**Section C Project Summary**

- Project Description: Construct 4 lane controlled access tolled highway.
  - Length (Mi.): 29.85 from Schematic
  - ROW (Ac.): 1176 - 75% 300-ft / 25% 400-ft Road Width
  - Project Limits
    - From: I-2, 0.8 Mi W of Showers Rd
    - To: I-69C, 0.6 Mi. S. of FM 162

**Key Assumptions**

- Independent Env. Document (EIS), Overweight Pavement Design, Toll Collection System, and Partially Compensable Utilities.

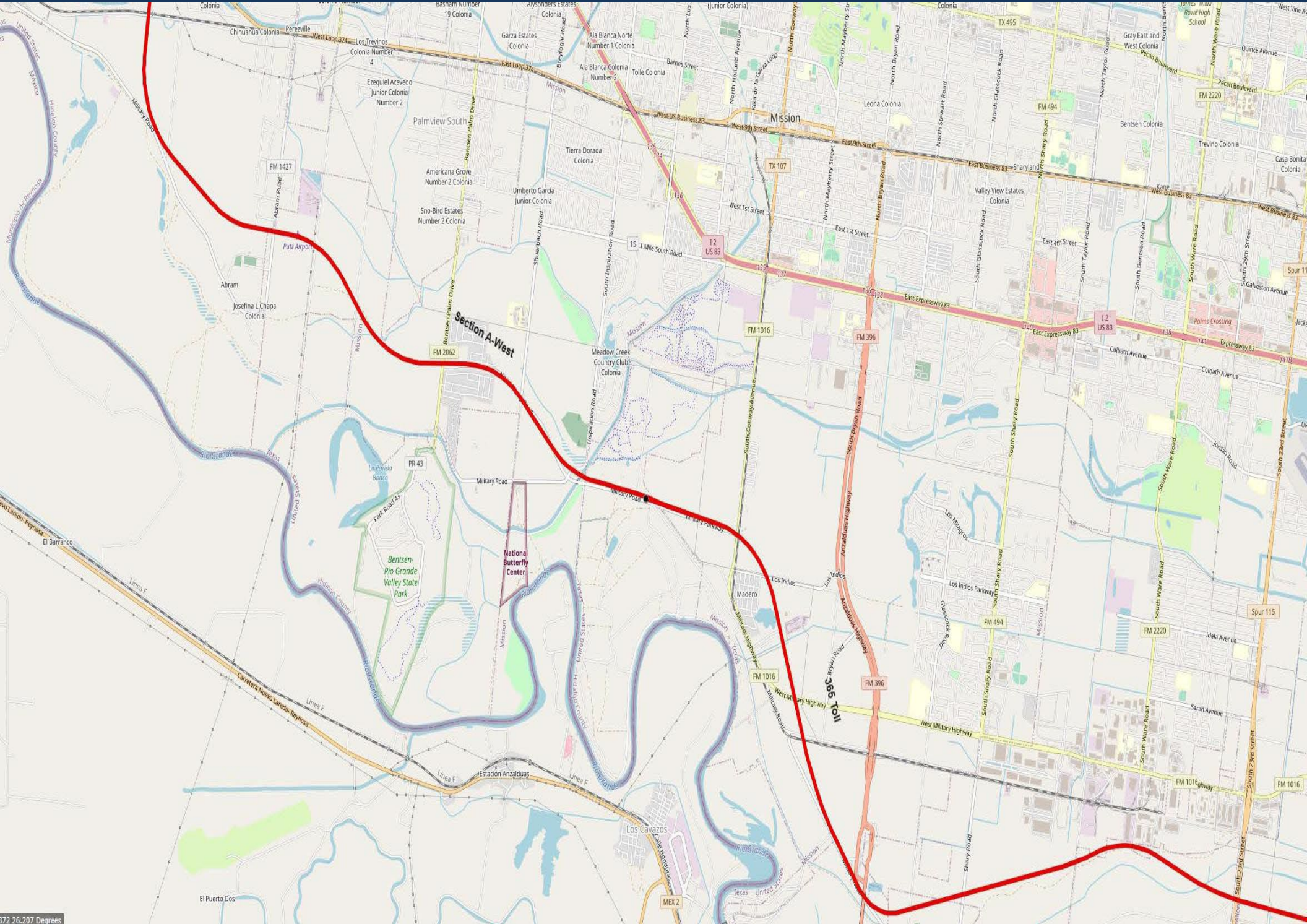
**Project Cost Overview**

**Total Development Cost: \$1,113,452,600 in 2023 Dollars**

- **Mgt. Support: \$10,813,200** - 1.5% of CC: GEC Oversight
- **Prelim. Engr.: \$39,648,400** - 5.5% of CC: Environmental (EIS), Schematic, Low Level Flight, Surveys
- **Final Design: \$50,461,600** - 7.0% of CC: PS&E, Geotech, Pavement Design, SUE, Topo
- **ROW Acq.: \$152,880,000** - \$130,000/AC for ROW Services, Title Services, Land Acquisition
- **Utility Relo.: \$57,670,400** - 8.0% of CC for Utility Relocations / Drainage
- **Toll Collect. Sys.: \$41,450,600** - 5.75% of CC: 5% for TSI + TCS Des. + 0.75% T&R
- **Construction: \$720,880,000** - \$23MM/Mi. (Approx.) for CRCP 2+2 Facility + 5% Contingency
- **Constr. Mgt.: \$39,648,400** - 5.5% of CC: CEI & CMT







372.26,207 Degrees







### 365 Tollway Segment 4 Project Summary

- Project Description: Construct 4 lane controlled access tolled highway.
  - Length (Mi.): 2.65 from Schematic
  - ROW (Ac.): 104 - 75% 300-ft / 25% 400-ft Road Width
  - Project Limits
    - From: FM 1016 / Conway Ave
    - To: FM 396 / Anzalduas Hwy

### Project Cost Overview

**Total Development Cost: \$96,400,000 in 2023 Dollars**

- **Mgt. Support: \$960,000** - 1.5% of CC: GEC Oversight
- **Prelim. Engr.: \$1,120,000** - 1.75% of CC: Environmental Re-evaluation (EA), Low Level Flight, Surveys
- **Final Design: 4,480,000** - 7.0% of CC: PS&E, Geotech, Pavement Design, SUE, Topo
- **ROW Acq.: \$13,520,000** - \$130,000/AC for ROW Services, Title Services, Land Acquisition
- **Utility Relo.: \$5,120,000** - 8.0% of CC for Utility Relocations / Drainage
- **Toll Collect. Sys.: \$3,680,000** - 5.75% of CC: 5% for TSI + TCS Des. + 0.75% T&R
- **Construction: \$64,000,000** - \$23MM/Mi. (Approx.) for CRCP 2+2 Facility + 5% Contingency
- **Constr. Mgt.: \$3,520,000** -5.5% of CC: CEI & CMT



**Section A (West) Project Summary**

- Project Description: Construct 4 lane controlled access tolled highway.
  - Length (Mi.): 8.26 from Schematic
  - ROW (Ac.): 325 - 75% 300-ft / 25% 400-ft Road Width
  - Project Limits
    - From: I-2, 0.8 Mi W of Showers Rd
    - To: FM 1016 / Conway Ave

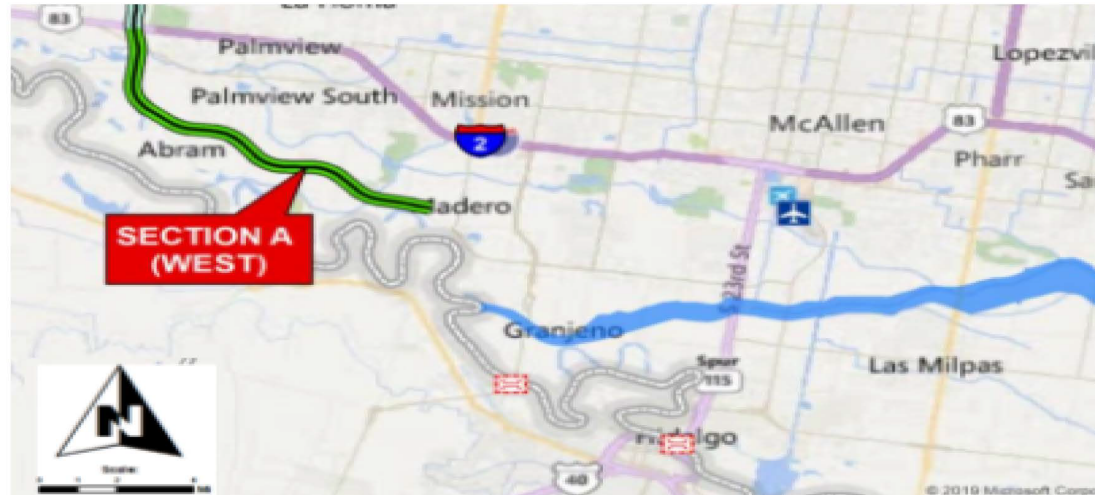
**Key Assumptions**

- Independent Env. Document (EIS), Overweight Pavement Design, Toll Collection System, and Partially Compensable Utilities.

**Project Cost Overview**

**Total Development Cost: \$308,057,100 in 2023 Dollars**

- **Mgt. Support: \$2,992,200** - 1.5% of CC: GEC Oversight
- **Prelim. Engr.: \$10,971,400** - 5.5% of CC: Environmental (EIS), Schematic, Low Level Flight, Surveys
- **Final Design: \$13,963,600** - 7.0% of CC: PS&E, Geotech, Pavement Design, SUE, Topo
- **ROW Acq.: \$42,250,000** - \$130,000/AC for ROW Services, Title Services, Land Acquisition
- **Utility Relo.: \$15,958,400** - 8.0% of CC for Utility Relocations / Drainage
- **Toll Collect. Sys.: \$11,470,100** - 5.75% of CC: 5% for TSI + TCS Des. + 0.75% T&R
- **Construction: \$199,480,000** - \$23MM/Mi. (Approx.) for CRCP 2+2 Facility + 5% Contingency
- **Constr. Mgt.: \$10,971,400** - 5.5% of CC: CEI & CMT





Thursday, September 14, 2023

Lenguaje  ▼

## Specialized Overweight Permits

Hidalgo County allows shippers to securely order specialized overweight permits online. The permits cover travel over the Hidalgo County roads listed below for vehicles weighing no more than the Mexican Legal Weight Limit or 125,000 lbs. For a more detailed explanation, see below.

### Permit Information

The Hidalgo County Regional Mobility Authority (HCRMA) administers the overweight permit corridor system for the Hidalgo County. Overweight permits issued through the HCRMA are only valid for destinations originating from the following points of entry:

- Anzalduas Bridge
- Pharr-Reynosa Bridge
- Donna-Rio Bravo Bridge
- Progreso Bridge

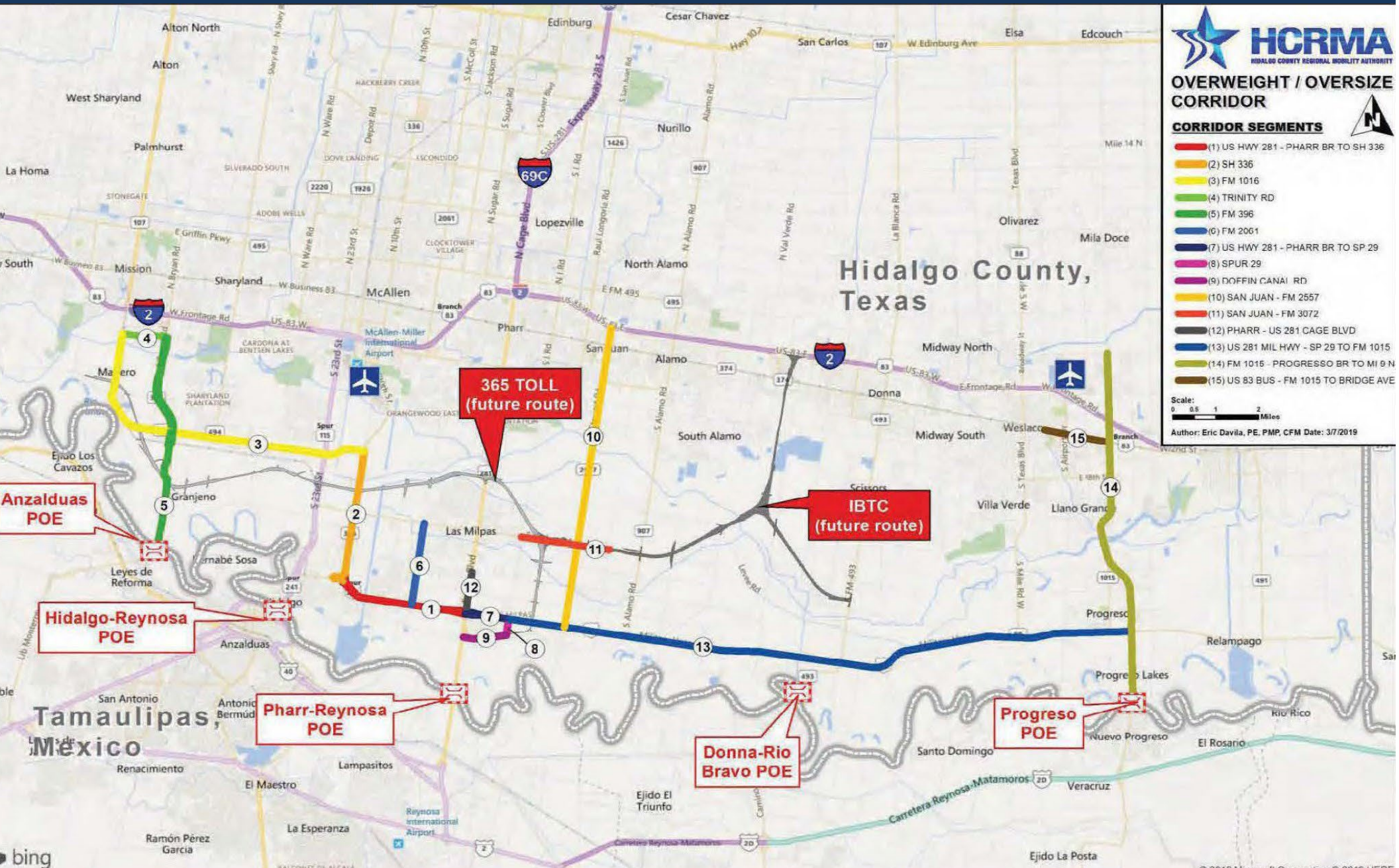
Or for movement on the following roads:

- (1) U.S. Highway 281 between its intersection with Pharr-Reynosa International Bridge and its intersection with State Highway 336.
- (2) State Highway 336 between its intersection with U.S. Highway 281 and its intersection with Farm-to-Market Road 1016.
- (3) Farm-to-Market Road 1016 between its intersection with State Highway 336 and its intersection with Trinity Road.
- (4) Trinity Road between its intersection with Farm-to-Market Road 1016 and its intersection with Farm-to-Market Road 396.
- (5) Farm-to-Market Road 396 between its intersection with Trinity Road and its intersection with the Anzalduas International Bridge.
- (6) Farm-to-Market Road 2061 between its intersection with Farm-to-Market Road 3072 and its intersection with U.S. Highway 281.
- (7) U.S. Highway 281 between its intersection with the Pharr-Reynosa International Bridge and its intersection with Spur 29.
- (8) Spur 29 between its intersection with U.S. Highway 281 and its intersection with Doffin Canal Road.
- (9) Doffin Canal Road between its intersection with the Pharr-Reynosa International Bridge and its intersection with Spur 29.
- (10) FM 2557 (Stewart Road) from US 281/Military Highway to Interstate 2 (US 83).
- (11) FM 3072 (Dicker Road) from Veterans Boulevard ('I' Road) to Cesar Chavez Road.
- (12) Route 12: US 281 (Cage Boulevard) from US 281/Military Highway to Anaya Road.
- (13) US 281/Military Highway from Spur 29 to FM 1015.
- (14) Farm to Market 1015 - Progreso International Bridge to Mile 9 North.
- (15) US 83 Business - Farm to Market 1015 to South Bridge Avenue.

The gross weight of cargo and equipment shall not exceed the allowable permissible axle load, the Mexican Legal Weight Limit or 125,000 lbs, whichever is less, and the dimensions of the load and vehicle shall not exceed 12' wide, 15'6" high, or 110' long.



# OVERWEIGHT / OVERSIZE CORRIDOR SEGMENTS



## OVERWEIGHT / OVERSIZE CORRIDOR

### CORRIDOR SEGMENTS

- (1) US HWY 281 - PHARR BR TO SH 336
- (2) SH 336
- (3) FM 1016
- (4) TRINITY RD
- (5) FM 396
- (6) FM 2061
- (7) US HWY 281 - PHARR BR TO SP 29
- (8) SPUR 29
- (9) DOFFIN CANAL RD
- (10) SAN JUAN - FM 2557
- (11) SAN JUAN - FM 3072
- (12) PHARR - US 281 CAGE BLVD
- (13) US 281 MIL HWY - SP 29 TO FM 1015
- (14) FM 1015 - PROGRESSO BR TO MI 9 N
- (15) US 83 BUS - FM 1015 TO BRIDGE AVE

Scale: 0 0.5 1 2 Miles  
 Author: Eric Davila, PE, PMP, CFM Date: 3/7/2019



# ▶ ACCUMULATED OVERWEIGHT REPORT:

January 14, 2014 - January 31, 2024

Total Permits Issued:	<b>321,050</b>
Total Amount Collected:	\$56,143,786
■ Convenience Fees:	\$1,097,586
■ Total Permit Fees:	\$55,046,200
-Pro Miles:	\$963,150
-TxDOT:	\$46,789,270
-HCRMA	\$7,293,780

\*Effective November 13, 2017, permit fee increased from \$80 to \$200



**HCRMA**

HIDALGO COUNTY REGIONAL MOBILITY AUTHORITY



# ▶ OVERWEIGHT REPORT FOR 2024:

January 1, 2024- January 31, 2024

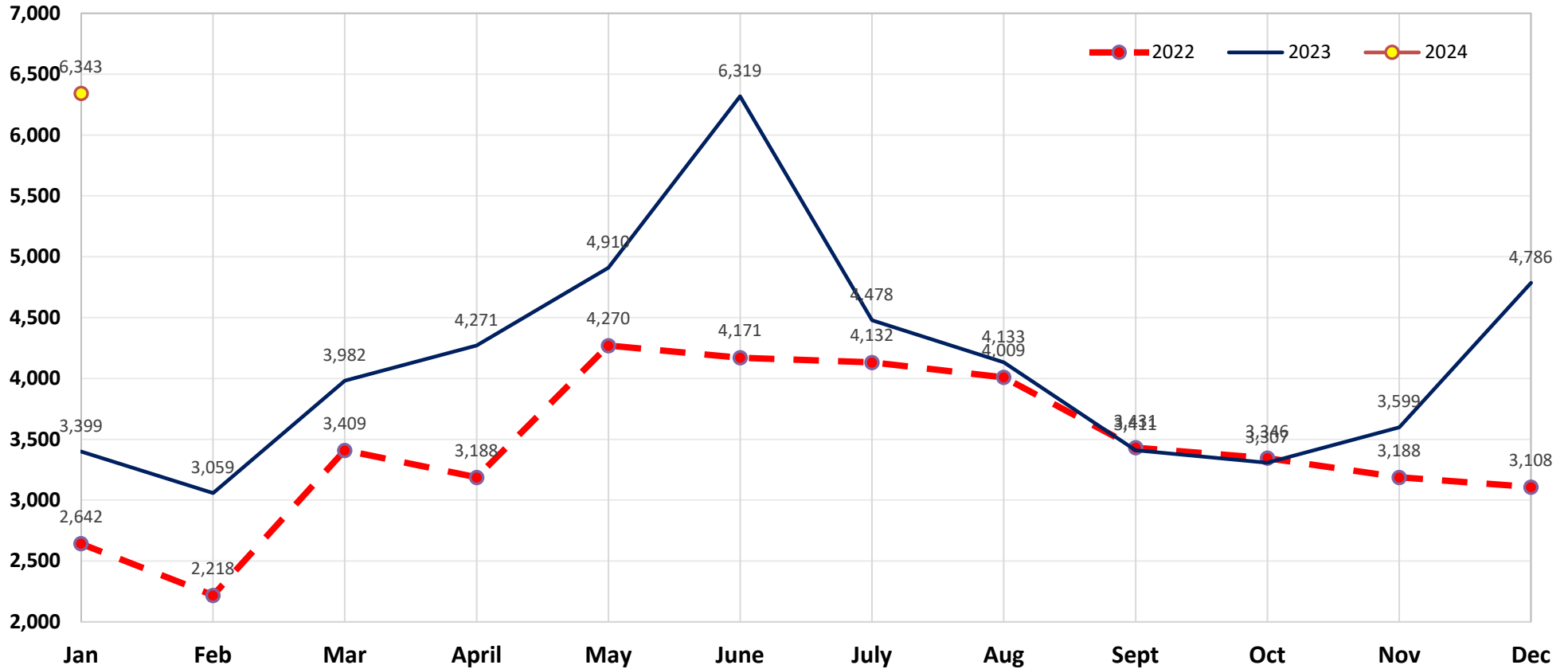
Total Permits Issued:	<b>6343</b>
Total Amount Collected:	\$1,299,224
■ Convenience Fees:	\$30,624
■ Total Permit Fees:	\$1,268,600
-Pro Miles:	\$ 19,029
-TxDOT:	\$1,078,310
-HCRMA	\$171,261





# JANUARY 1, 2024 – JANUARY 31, 2024

## Overweight/Oversized Permit Count 2022 - 2024 Monthly Comparison



### NOTES:

- The accumulated permit count for 2022: 2,642 in comparison to 2023: 3,399  
Annual increase comparison of: 2022: +3,701[140%] and 2023:+2,944 [86.6%]
- Monthly permit count of 6,343 represents a 86.6% (increase, 2,944) compared to the same month in 2023 (3,399).